

EMC Components

ACF Series ACF321825, 451832 Types

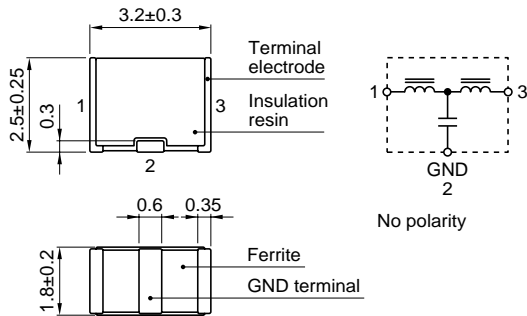
3-Terminal Filters for Signal Line and DC Power Line SMD

FEATURES

- The ACF series are T-type EMC filters incorporating ferrite chip beads and multilayer ceramic chip capacitors.
- The external structure consists entirely of ferrite, enabling these parts to achieve superior attenuation characteristics despite their extremely compact dimensions.
- Because they can be mounted on edge, the ACF series are ideal for high-density circuit configurations.
- Available for reflow soldering.

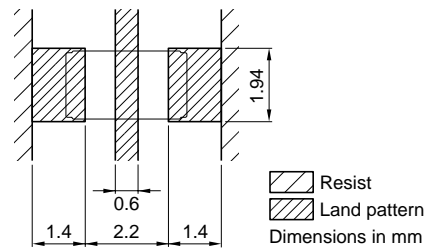
ACF321825 TYPE

SHAPES AND DIMENSIONS/CIRCUIT DIAGRAM



RECOMMENDED PC BOARD PATTERN

REFLOW SOLDERING

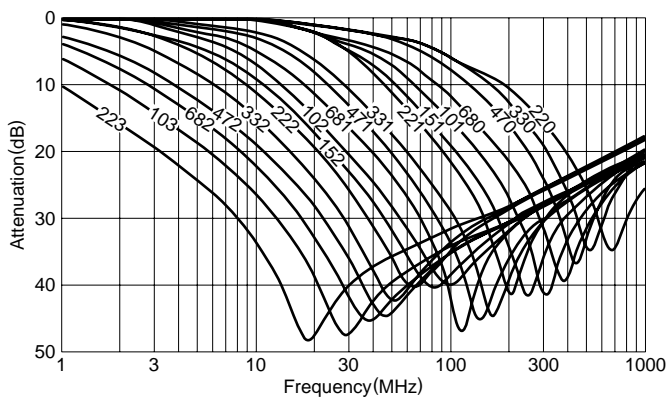


ELECTRICAL CHARACTERISTICS

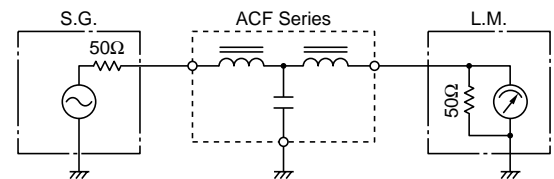
Part No.	Maximum attenuation frequency (MHz)	25dB attenuation frequency range (MHz)	Rated voltage E _{dc} (V)max.	Rated current (mA)max.	DC resistance (Ω)max. [Terminal No.1 to 3]	Insulation resistance (MΩ)min. [Terminal No.1 to 2/No.2 to 3]
ACF321825-223-T	17	11 to 55	20	300	0.15	1000
ACF321825-103-T	27	17 to 60	20	300	0.15	1000
ACF321825-682-T	37	22 to 75	20	300	0.15	1000
ACF321825-472-T	45	30 to 85	20	300	0.15	1000
ACF321825-332-T	55	37 to 90	20	300	0.15	1000
ACF321825-222-T	65	45 to 105	20	300	0.15	1000
ACF321825-152-T	80	60 to 115	20	300	0.15	1000
ACF321825-102-T	100	80 to 140	20	300	0.15	1000
ACF321825-681-T	120	95 to 150	20	300	0.15	1000
ACF321825-471-T	145	120 to 180	20	300	0.15	1000
ACF321825-331-T	165	130 to 210	20	300	0.15	1000
ACF321825-221-T	200	170 to 250	20	300	0.15	1000
ACF321825-151-T	240	205 to 280	20	300	0.15	1000
ACF321825-101-T	300	265 to 340	20	300	0.15	1000
ACF321825-680-T	370	340 to 420	20	300	0.15	1000
ACF321825-470-T	450	420 to 500	20	300	0.15	1000
ACF321825-330-T	530	500 to 600	20	300	0.15	1000
ACF321825-220-T	650	600 to 700	20	300	0.15	1000

TYPICAL ELECTRICAL CHARACTERISTICS

ATTENUATION vs. FREQUENCY CHARACTERISTICS



MEASURING CIRCUIT



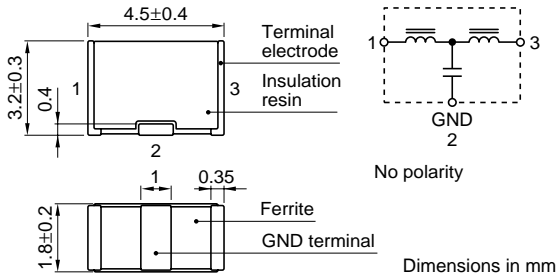
EMC Components

ACF Series ACF321825, 451832 Types

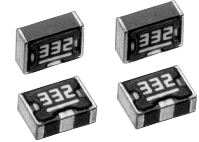
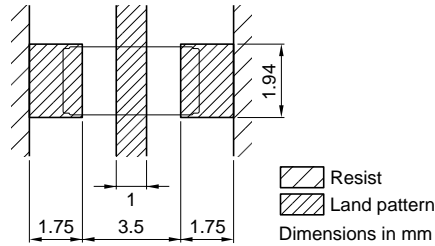
3-Terminal Filters for Signal Line and DC Power Line SMD

ACF451832 TYPE

SHAPES AND DIMENSIONS/CIRCUIT DIAGRAM



RECOMMENDED PC BOARD PATTERN REFLOW SOLDERING

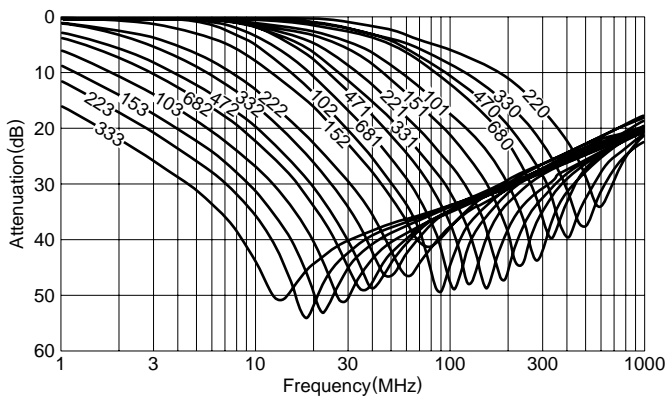


ELECTRICAL CHARACTERISTICS

Part No.	Maximum attenuation frequency (MHz)	25dB attenuation frequency range (MHz)	Rated voltage E _{dc} (V)max.	Rated current (mA)max.	DC resistance (Ω)max. [Terminal No.1 to 3]	Insulation resistance (MΩ)min. [Terminal No.1 to 2/No.2 to 3]
ACF451832-333-T	12	7 to 60	50	300	0.15	1000
ACF451832-223-T	15	9 to 65	50	300	0.15	1000
ACF451832-153-T	18	11 to 70	50	300	0.15	1000
ACF451832-103-T	23	15 to 75	50	300	0.15	1000
ACF451832-682-T	35	20 to 85	50	300	0.15	1000
ACF451832-472-T	40	25 to 95	50	300	0.15	1000
ACF451832-332-T	50	35 to 100	50	300	0.15	1000
ACF451832-222-T	60	40 to 110	50	300	0.15	1000
ACF451832-152-T	75	50 to 130	50	300	0.15	1000
ACF451832-102-T	90	65 to 150	50	300	0.15	1000
ACF451832-681-T	105	75 to 160	50	300	0.15	1000
ACF451832-471-T	125	95 to 180	50	300	0.15	1000
ACF451832-331-T	150	115 to 205	50	300	0.15	1000
ACF451832-221-T	190	150 to 250	50	300	0.15	1000
ACF451832-151-T	230	190 to 290	50	300	0.15	1000
ACF451832-101-T	280	235 to 335	50	300	0.15	1000
ACF451832-680-T	340	295 to 395	50	300	0.15	1000
ACF451832-470-T	410	360 to 460	50	300	0.15	1000
ACF451832-330-T	500	450 to 550	50	300	0.15	1000
ACF451832-220-T	600	550 to 650	50	300	0.15	1000

TYPICAL ELECTRICAL CHARACTERISTICS

ATTENUATION vs. FREQUENCY CHARACTERISTICS



MEASURING CIRCUIT

